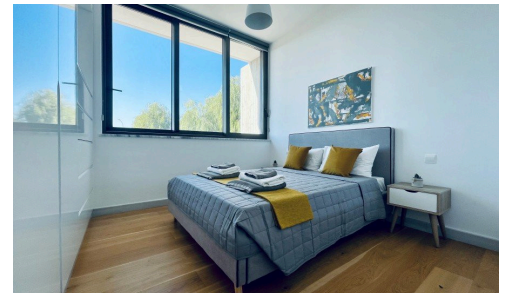
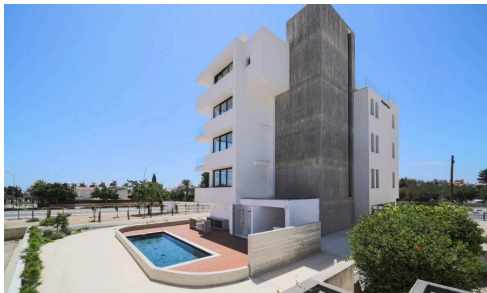


#6686



📍 Kato Paphos - Universal, Paphos

€1,300 /month

Emerald is a modern apartment - development, ideally located in a central tourist location of Pafos City .It comprises a 5 storey building with 6 Apartments Apartments on levels 1 and have similar internal layouts and are of one and two bedrooms with large verandas. On the third level is a two bedroom apartment and on fourth and third level a duplex penthouse with large veranda and jacuzzi tap on the top level.

This 2ND FLOOR 1 BED APARTMENT is Fully furnished with modern design ,located in a residential area and only a short walk from the picturesque fishing harbor , the beach, the ancient fort and busy restaurant district .Also

Bedrooms



Bathrooms



A.T & P.E Homes (Cyprus) Ltd



**Sarah Eleni Hibbett**

☎ (+357) 96468749

✉ sarah@atpehomescyprus.com

