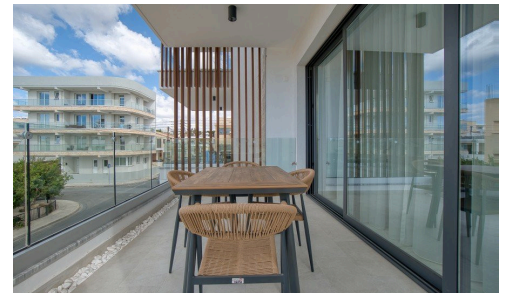
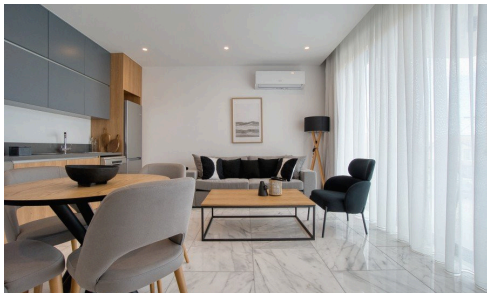


#6553



 Paphos Town, Paphos

**€250,000**

Nestled in a quiet residential area of Paphos, this four-floor development consists of 7 spacious and contemporary one- and two-bedroom apartments. With only 7 units in total, this superb project boasts just 2 apartments per floor. The top floor consists of a single two-bedroom penthouse with a large roof terrace offering unparalleled sea and mountain views. All residences are finished with an array of stylish features including marble and wooden floors, granite worktops, hand crafted wood kitchen and wardrobes and the finest sanitary fittings. The combination of these luxurious properties and the unbeatable location make this an ideal investment for either buy to let or permanent living.

Bedrooms



Bathrooms




Covered

 **50 m<sup>2</sup>**

**A.T & P.E Homes (Cyprus) Ltd**



**Sarah Eleni Hibbett**

 (+357) 96468749

 sarah@atpehomescyprus.com

