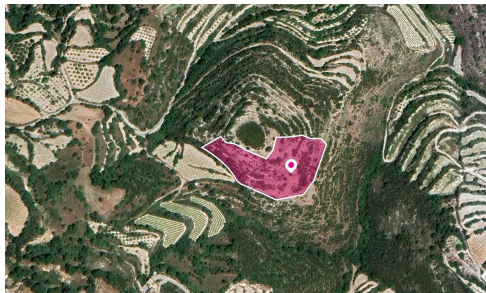
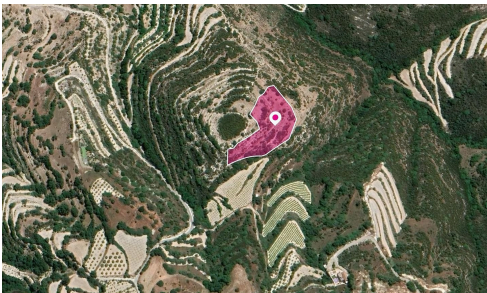


#5167



## Agricultural Field, Koili, Paphos

€26,250

📍 Koili, Paphos

Agricultural field, extending to about 8,696 sq.m in total. Access to the field is via a right of passage.

It falls within Zone Γ3, with a building coefficient of 10%, coverage of 10%, and permission for 2 floors (8.3m) of construction.

Area

📏 8696 m<sup>2</sup>

A.T & P.E Homes (Cyprus) Ltd



**Sarah Eleni Hibbett**

☎ (+357) 96468749

✉ sarah@atpehomescyprus.com

