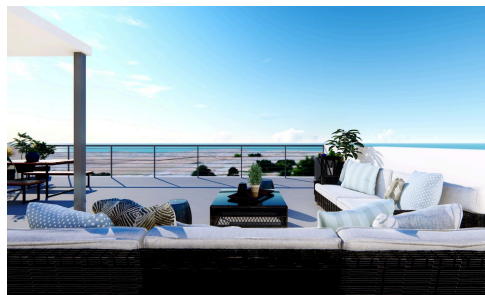


#3780



Petridia E – Apartment No. A102 – (Plot No. 589)

€320,000 +VAT

 Countryside, Paphos

Petridia E apartment No. A102 is a modern residential 3 bedroom apartment in the village of Petridia in the district of Paphos. The apartment enjoys its own covered verandas. The residents will be able to enjoy easy access to public and private schools, public and private healthcare while being only 7 minutes' drive for Paphos City Centre.

Bedrooms

 3

Covered

 137.9 m²


Energy efficiency rating

 B+

A.T & P.E Homes (Cyprus) Ltd



Sarah Eleni Hibbett

 (+357) 96468749

 sarah@atpehomescyprus.com

