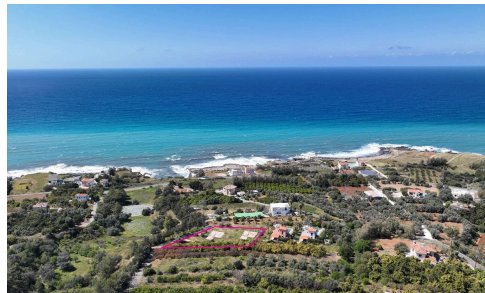
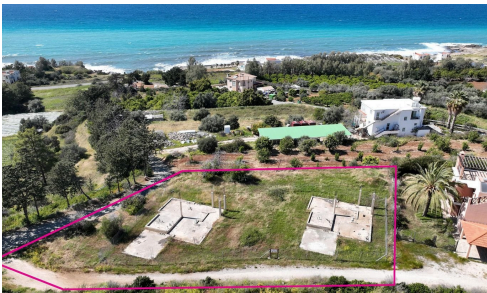
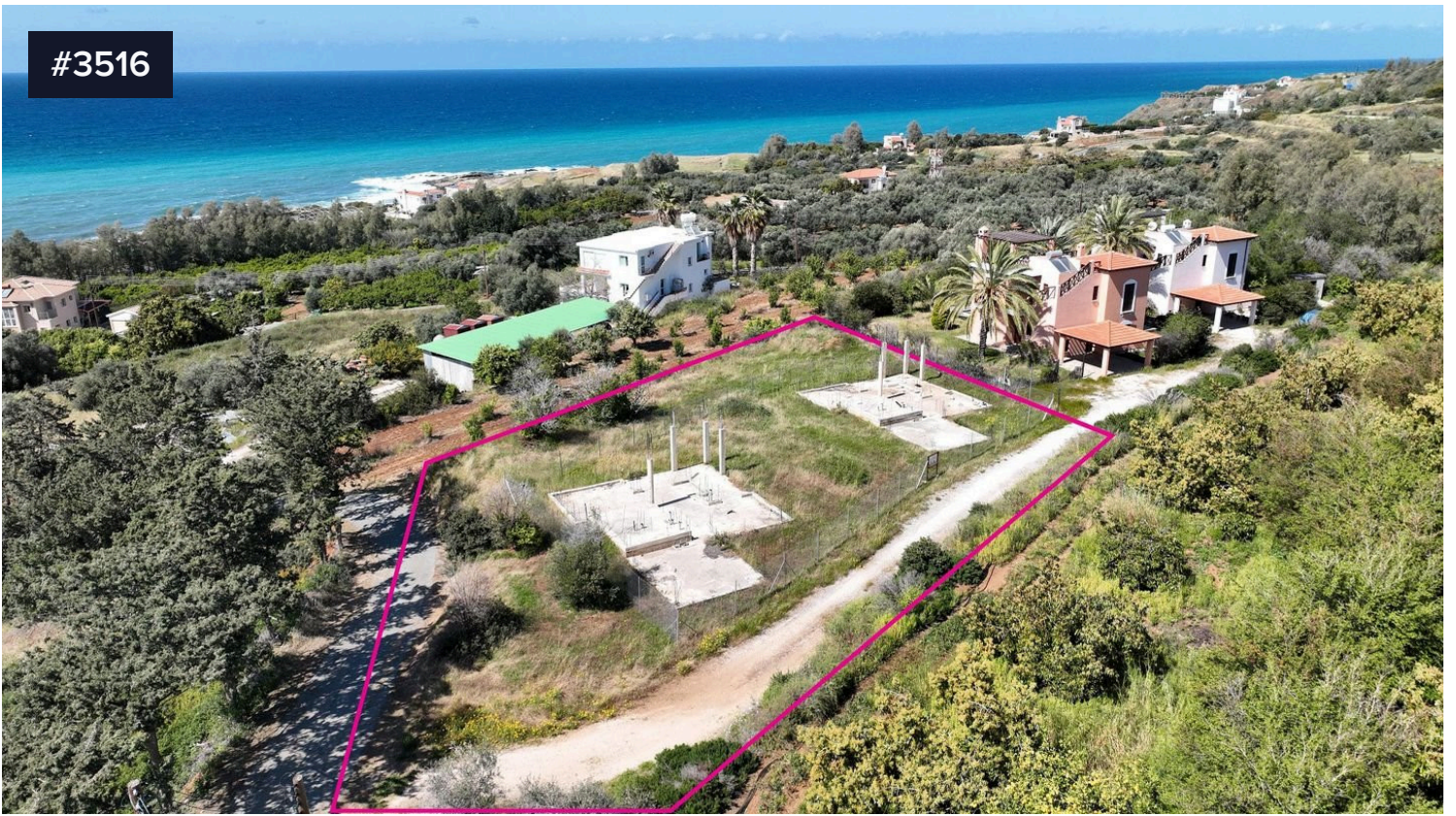


#3516



Two Incomplete Houses in Nea Dimmata, Paphos

€100,000 +VAT

📍 Nea Dimmata, Paphos

Two incomplete houses of which part of the foundations is completed within a residential field, extending to about 1676 sqm. in total. Access to the field is via a registered road with total frontage of approx.44m. Upon completion (approx. 129sq.m. internal area each) the ground floor of both houses will be comprised of an open plan living/ dining room with a fireplace and a kitchen area as well as a guest bathroom and terraces (25sq.m. uncovered and

Area

📏 129 m²

A.T & P.E Homes (Cyprus) Ltd



Sarah Eleni Hibbett

☎ (+357) 96468749

✉ sarah@atpehomescyprus.com

