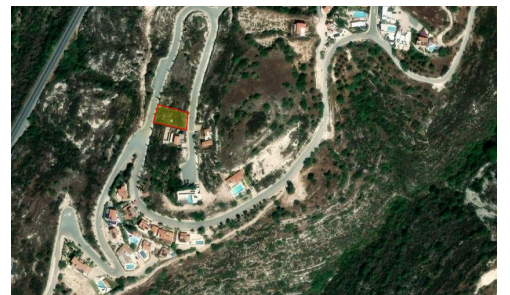
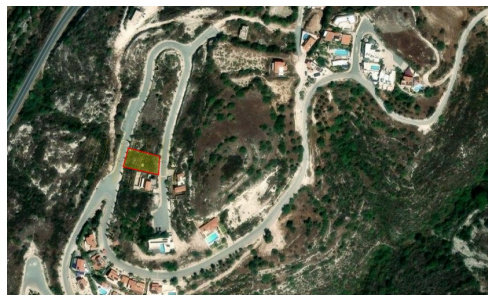


#3226



Residential Plot | Tsada, Pafos area

€165,000

This residential plot located on the hills of Tsada is available for sale. The plot features panoramic views on the sea and Paphos city and easy access to the village centre and amenities. The plot has a planning zone H5 (100%) with building density of 30% and coverage ratio of 20%. Construction is allowed up to 2 floors and a maximum building height of 8.3 meters.

Area size – 692 sq. m.


Area

 692 m²

A.T & P.E Homes (Cyprus) Ltd



Sarah Eleni Hibbett

 (+357) 96468749

 sarah@atpehomescyprus.com

