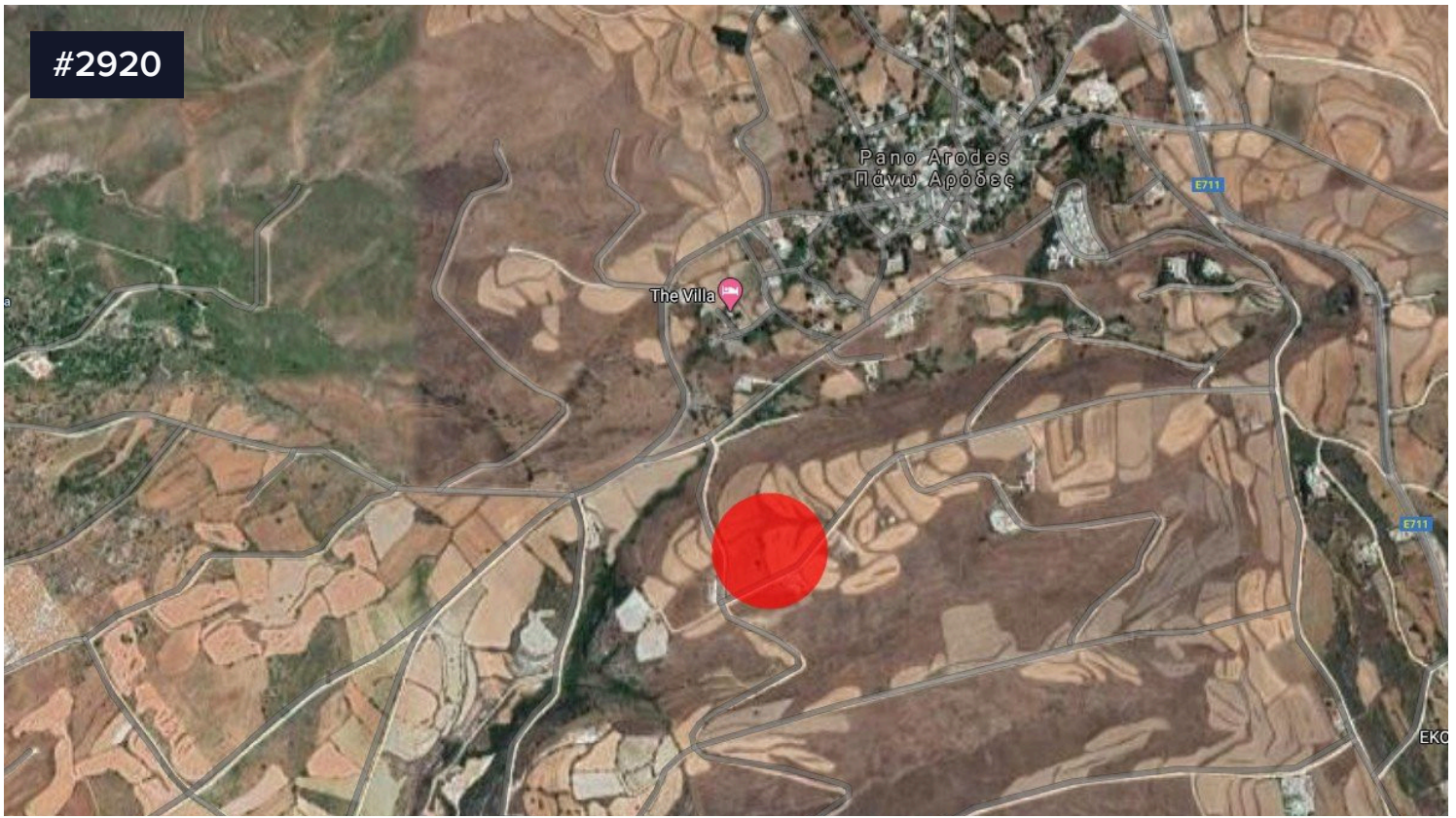


#2920



Touristic Plot for Sale located in Pano Arodes Paphos

€435,000

📍 Pano Arodes, Paphos

Touristic land situated 840m² away from the center of Pano Arodes village in Paphos close to Akama's Park.

The land has an irregular shape and its benefited from it's corner position.

The asset can be bought as an investment and further development of holiday homes or to be divided in plots.

Area

📏 6916 m²

A.T & P.E Homes (Cyprus) Ltd



Sarah Eleni Hibbett

☎ (+357) 96468749

✉ sarah@atpehomescyprus.com

